



CD137 Polyclonal Antibody

Catalog No	YP-Ab-13878
Isotype	IgG
Reactivity	Human;Rat;Mouse;
Applications	WB;IF;ELISA
Gene Name	TNFRSF9
Protein Name	Tumor necrosis factor receptor superfamily member 9
Immunogen	The antiserum was produced against synthesized peptide derived from human TNFRSF9. AA range:101-150
Specificity	CD137 Polyclonal Antibody detects endogenous levels of CD137 protein.
Formulation	Liquid in PBS containing 50% glycerol, 0.5% BSA and 0.02% sodium azide.
Source	Polyclonal, Rabbit,IgG
Purification	The antibody was affinity-purified from rabbit antiserum by affinity-chromatography using epitope-specific immunogen.
Dilution	Western Blot: 1/500 - 1/2000. Immunofluorescence: 1/200 - 1/1000. ELISA: 1/10000. Not yet tested in other applications.
Concentration	1 mg/ml
Purity	≥90%
Storage Stability	-20°C/1 year
Synonyms	TNFRSF9; CD137; ILA; Tumor necrosis factor receptor superfamily member 9; 4-1BB ligand receptor; CDw137; T-cell antigen 4-1BB homolog; T-cell antigen ILA; CD antigen CD137
Observed Band	27kD
Cell Pathway	Membrane; Single-pass type I membrane protein.
Tissue Specificity	Expressed on the surface of activated T-cells.
Function	function:Receptor for TNFSF14/4-1BBL. Possibly active during T cell activation.,similarity:Contains 4 TNFR-Cys repeats.,subunit:Interacts with TRAF1, TRAF2 and TRAF3. Interacts with LRR-repeat protein 1/LRR-1.,tissue specificity:Expressed on the surface of activated T-cells.,
Background	The protein encoded by this gene is a member of the TNF-receptor superfamily. This receptor contributes to the clonal expansion, survival, and development of T cells. It can also induce proliferation in peripheral monocytes, enhance T cell apoptosis induced by TCR/CD3 triggered activation, and regulate CD28 co-stimulation to promote Th1 cell responses. The expression of this receptor is induced by lymphocyte activation. TRAF adaptor proteins have been shown to bind to this receptor and transduce the signals leading to activation of NF-kappaB. [provided by RefSeq, Jul 2008],



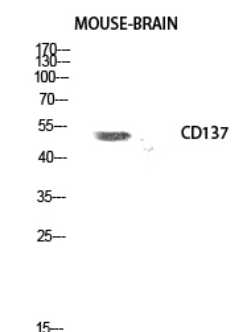
matters needing attention

Avoid repeated freezing and thawing!

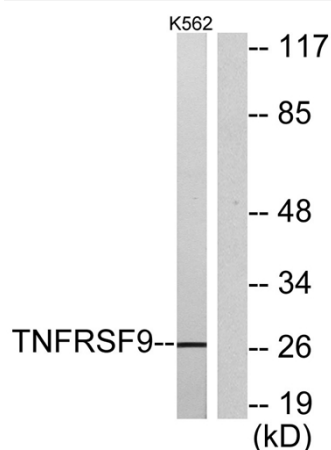
Usage suggestions

This product can be used in immunological reaction related experiments. For more information, please consult technical personnel.

Products Images



Western Blot analysis of mouse-brain cells using CD137 Polyclonal Antibody diluted at 1:500



Western blot analysis of lysates from K562 cells, using TNFRSF9 Antibody. The lane on the right is blocked with the synthesized peptide.